

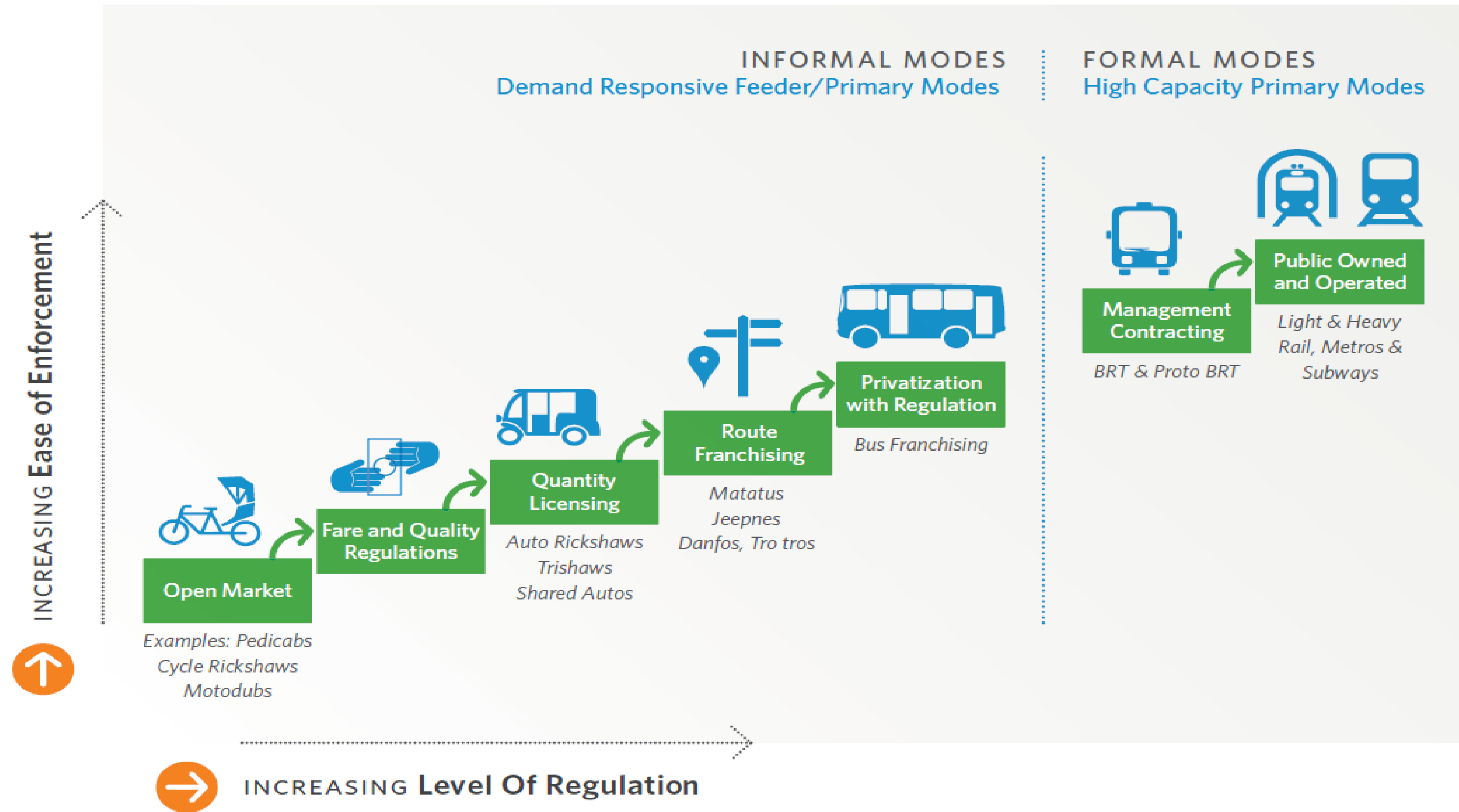
Market Solutions vs. Government Capacity



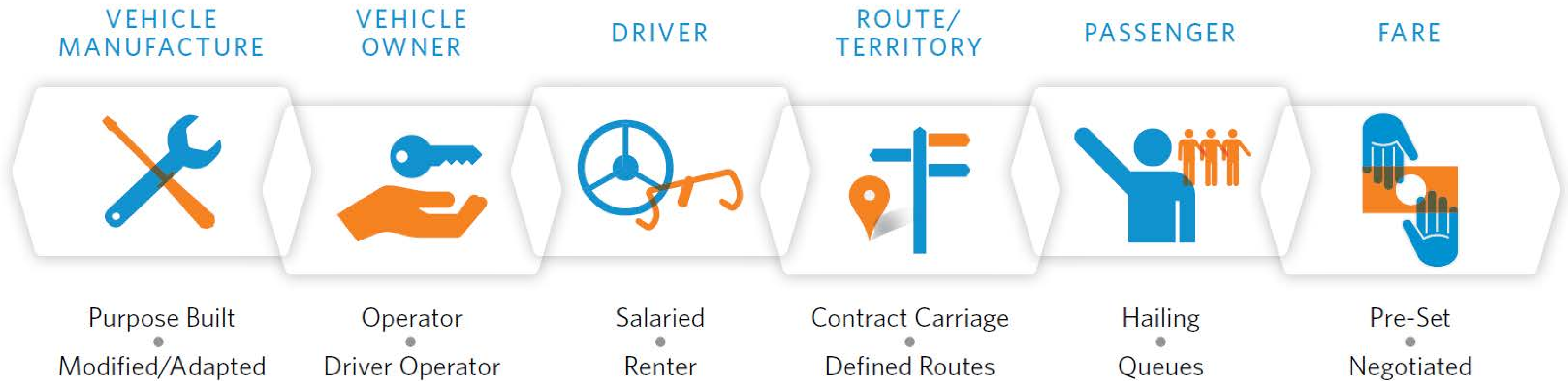
Woodcut of a toll gate on the Islington turnpike road. *From A brief history of English roads: the turnpike era*

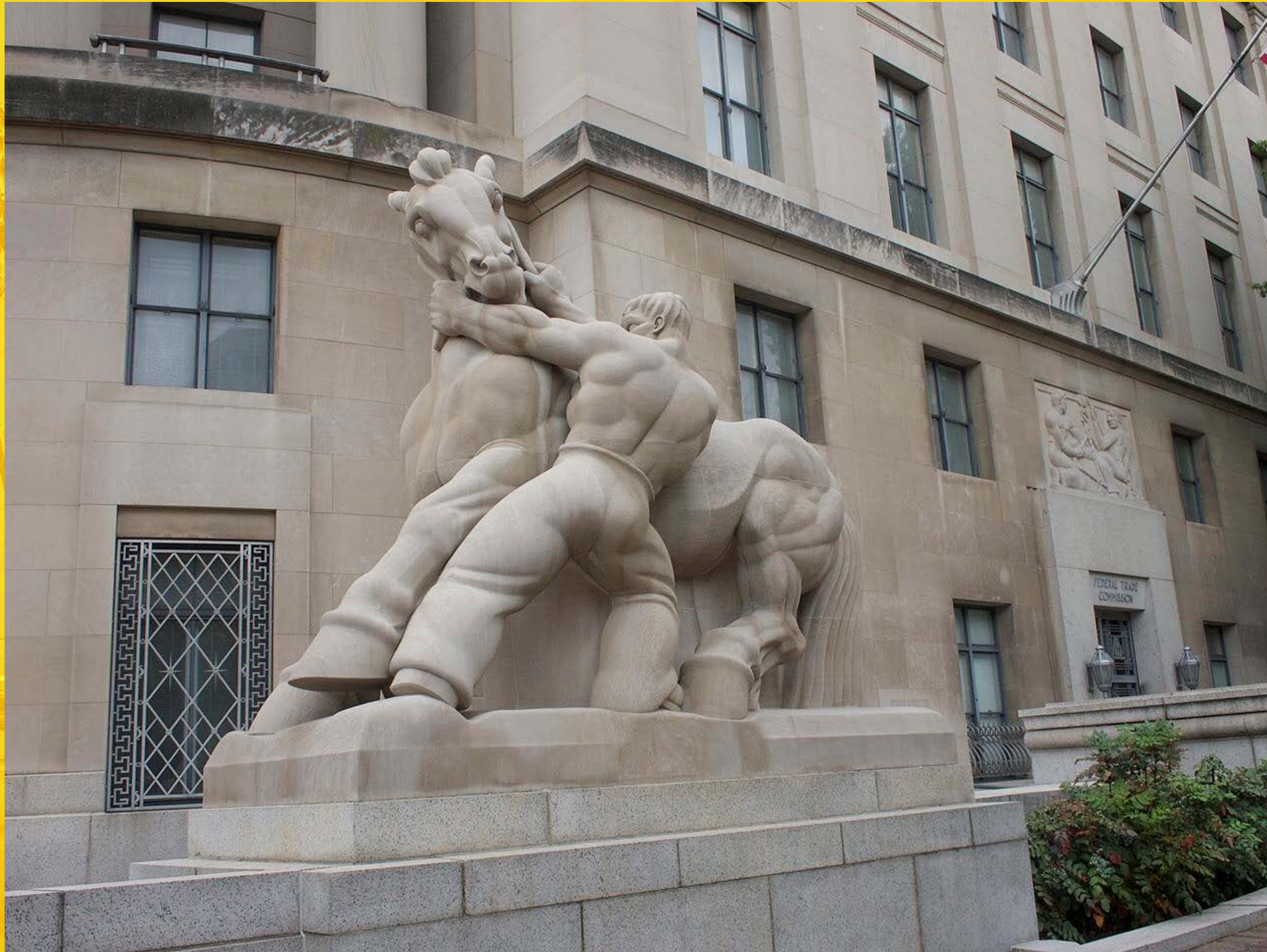
Formality and Informality vs. Regulation and Enforcement in Public Transportation

(Intellectap 2012)



The Informal Transportation Value Chain





“Man controlling trade” Sculpture at the US Federal Trade Commission, Washington, DC, Image from Wikimedia Commons