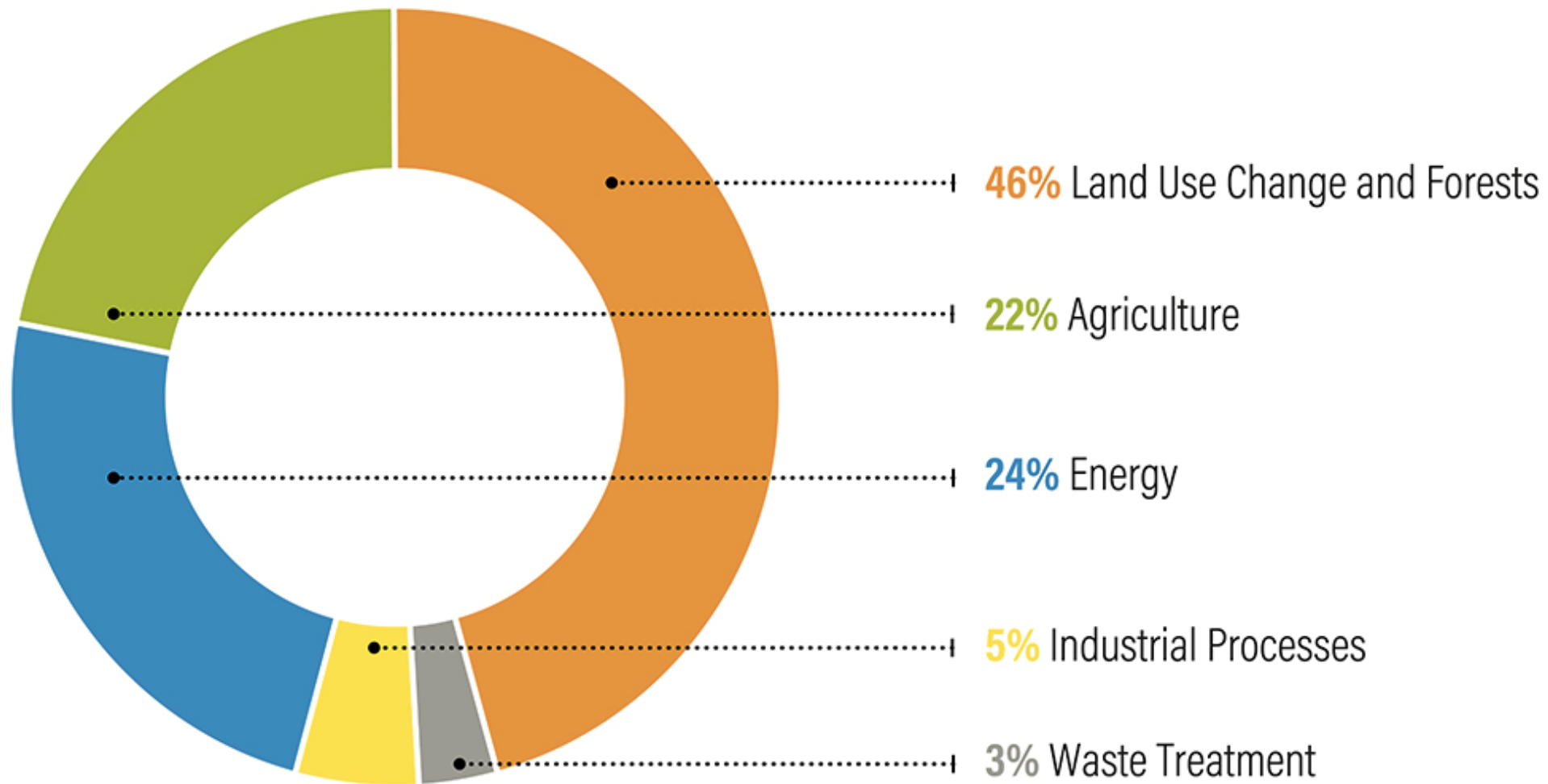


Climate change and transport in Brazil

Ana Toni

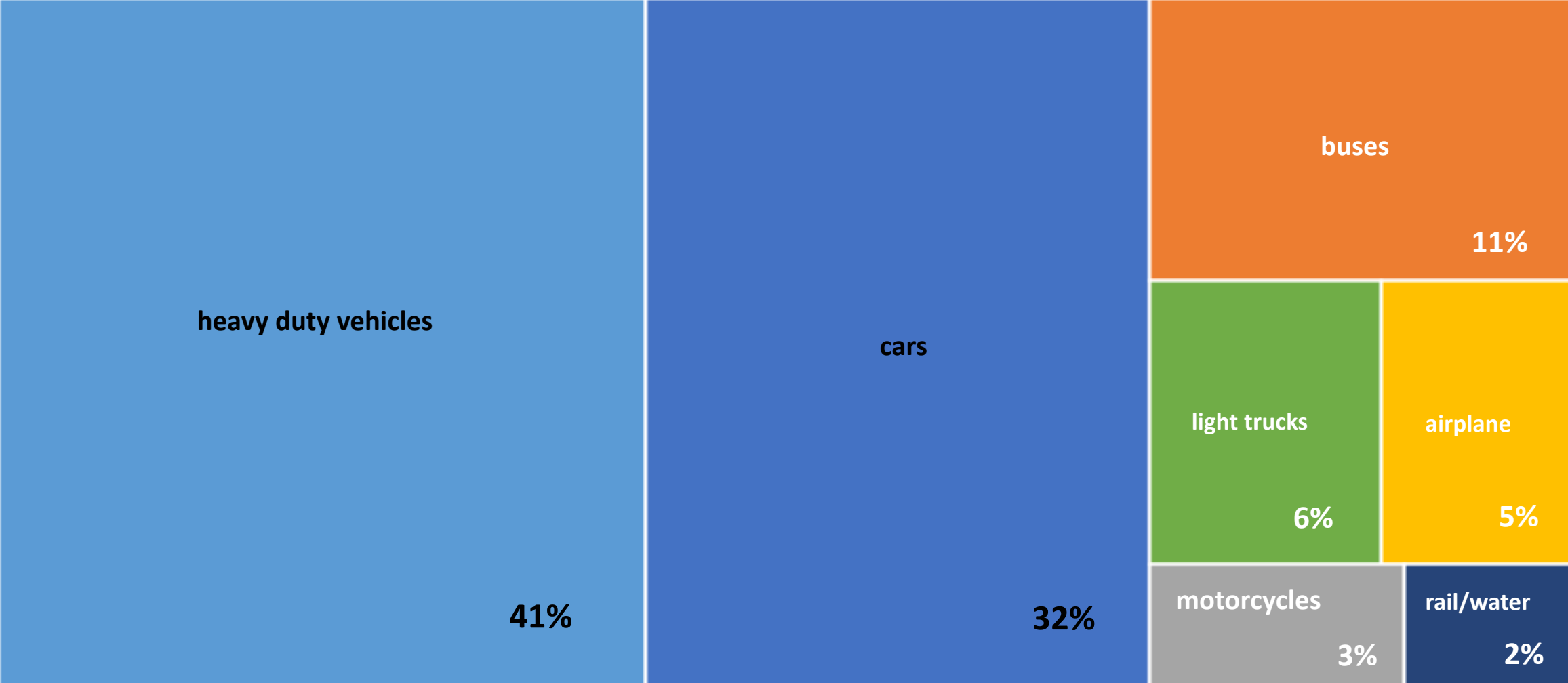
Estimates of GHG* Net Emissions in Brazil in 2015



* CO₂e GWP

Source: seeg.eco.br

GHG emissions in Brazil



emissions by mode in transport sector

brazilian NDC and targets to transport

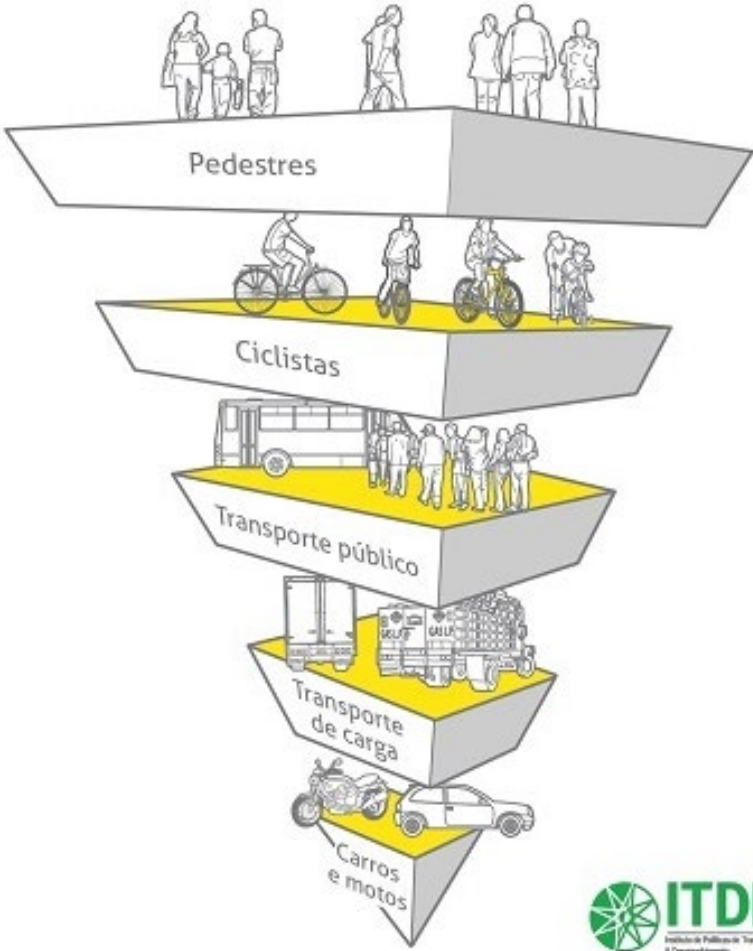
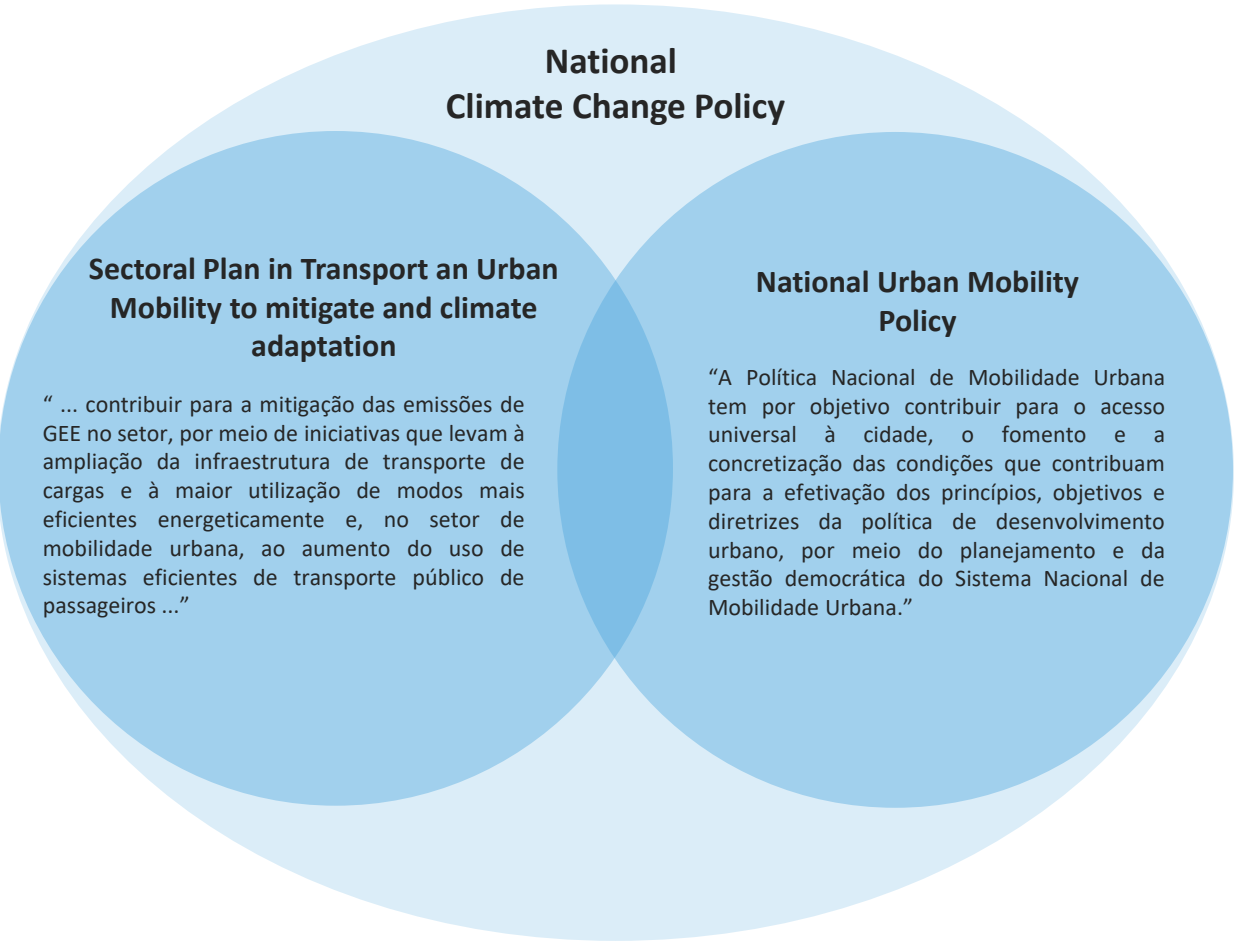
Increase the biofuels in the energy matrix

“Aumentar a participação de bioenergia sustentável na matriz energética brasileira para aproximadamente 18% até 2030, expandindo o consumo de biocombustíveis, aumentando a oferta de etanol, inclusive por meio do aumento da parcela de biocombustíveis avançados (segunda geração), e aumentando a parcela de biodiesel na mistura do diesel”

Promote efficiency measures and increase the transport infrastructure in urban areas

“No setor de transportes, promover medidas de eficiência, melhorias na infraestrutura de transportes e no transporte público em áreas urbanas”

climate and transport policy



how to reduce the emissions?

tools

Avoid

Avoid and reduce the need for motorized travel

Urban and Transport Plans

- Mobility Plans
- TOD - Transport Oriented Development
- Mixed land use
- Polynuclear Cities
- Remote jobs

Shift

Shift to more environmentally friendly modes

Regulation

Transport Demand Management

- Public Parking
- Congestion charge
- Personal mobility plans
- Share Mobility

Infrastructure

- Train, Subway and Tram
- Bus Lane and BRT's
- Cycle Lanes and Sidewalks

Improve

Improve energy efficiency of transport modes

Technology

- Biofuels
- More efficiency engines
- Electric motors
- Renewable energy
- IT operation managements